

SHEPHERD'S WATCH

INDEPENDENT SENIOR LIVING

GREENVILLE, TENNESSEE

ELLE WAY

TABLE OF CONTENTS

| | |
|---------------------------------------|-------|
| CONCEPT BOARD | 3 |
| CONCEPT STATEMENT | 4 |
| REDUCED FLOOR PLAN | 5 |
| RESTROOMS | 6 |
| FINISH PLAN | 7 |
| REFLECTED CEILING PLAN | 8 |
| ENLARGED FOYER REFLECTED CEILING PLAN | 9 |
| LIGHTING SCHEDULE | 10 |
| FOYER FURNITURE PLAN | 11 |
| CUSTOM CABINET | 12-13 |
| CABINET RENDERINGS | 14 |
| FOYER BOARD | 15 |
| LIVING ROOM BOARD | 16 |
| COFFEE BAR AND LOUNGE BOARD | 17 |
| LIBRARY BOARD | 18 |
| FINISH AND FFE SCHEDULES | 19 |
| CORRIDOR ELEVATION | 20 |
| RENDERINGS | 21-22 |



CONCEPT BOARD



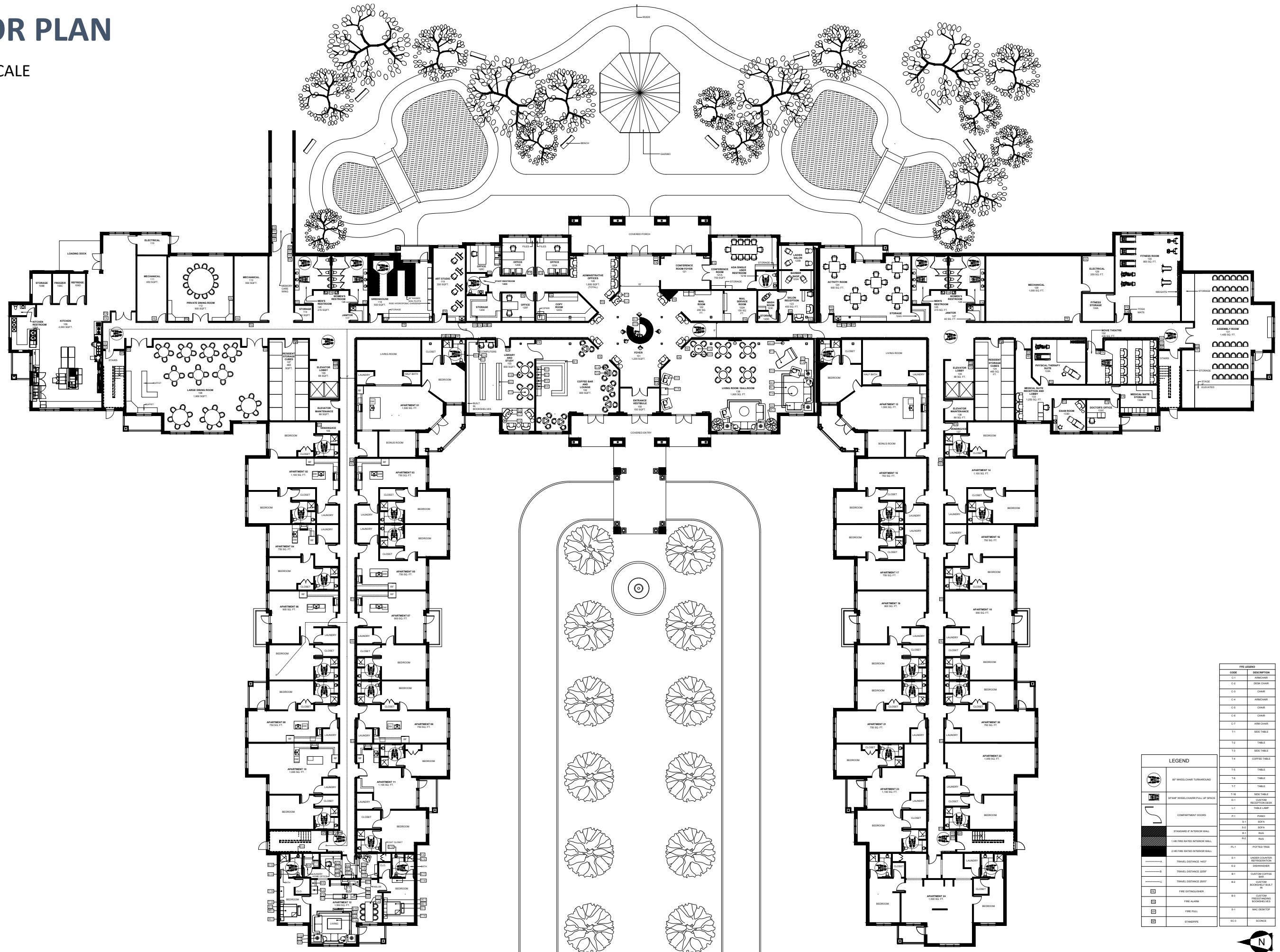
"I'm a sheepdog. I live to protect the flock and confront the wolf."
-Lt. Col. Dave Grossman



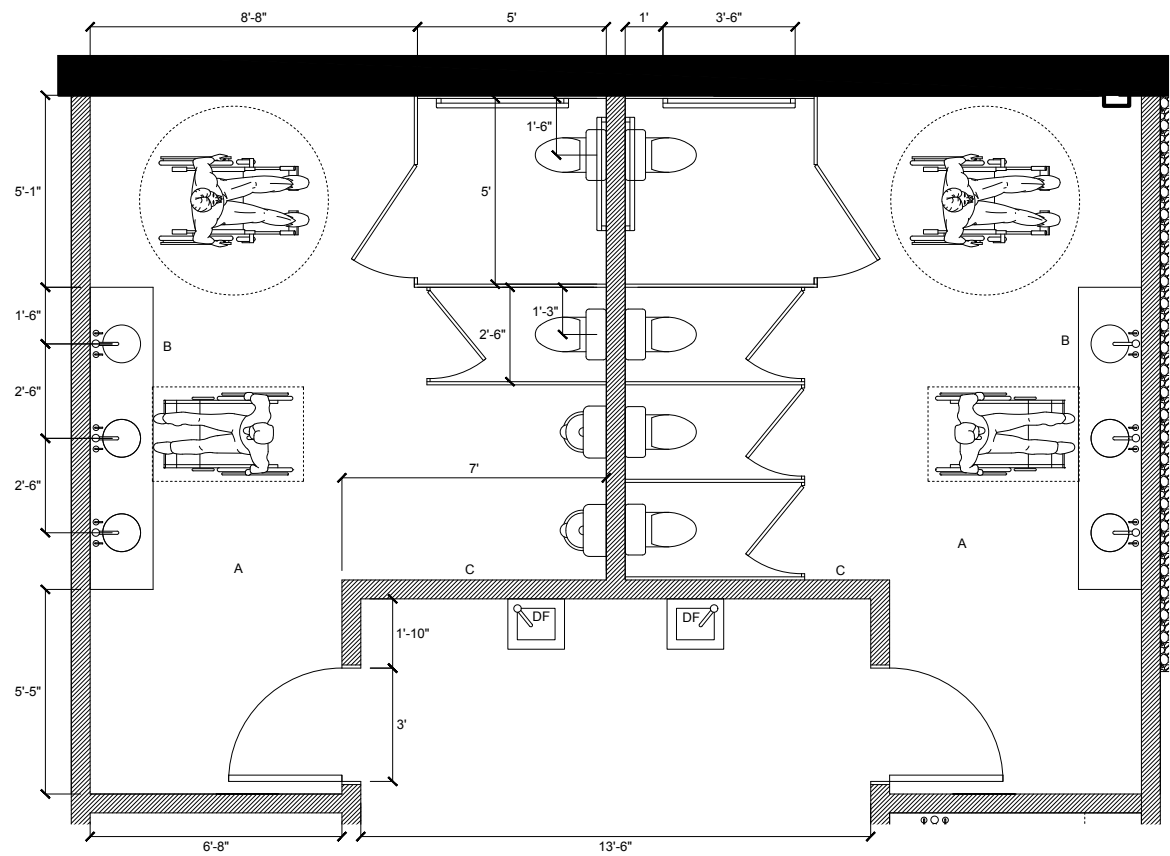
CONCEPT STATEMENT

The concept of my independent senior living facility is the shepherd and his sheepdog, specifically their role. They work together to look after their flock and faces down any threat. Therefore, this facility will strive to make its residents feel protected and safe while fostering a sense of community. This will be achieved through sociopetal design to encourage resident interaction by the inclusion of spaces like an activity room and a greenhouse as well as seating arrangements that face one another. Additionally, the incorporation of soothing and earth-toned colors such as sage green, taupe, and shades of greys and blues, as well natural textures like cotton, leather, smooth stone and wood, and natural foliage. This will work to integrate the Tennessee mountainous landscape into the interior of the space and increase the quality of life of its residents.

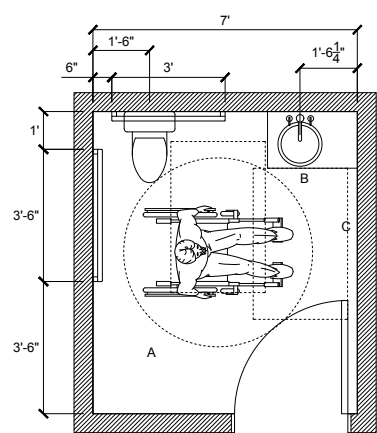
NOT TO SCALE



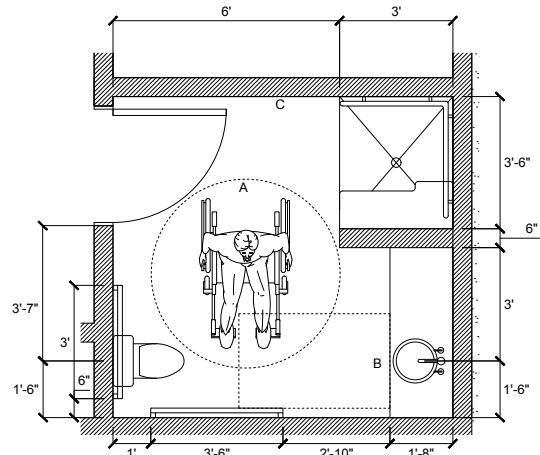
RESTROOMS



ADA MULTI OCCUPANT RESTROOM
SCALE: 1/4" = 1'-0"



SINGLE OCCUPANT ADA RESTROOM
SCALE: 1/4" = 1'-0"

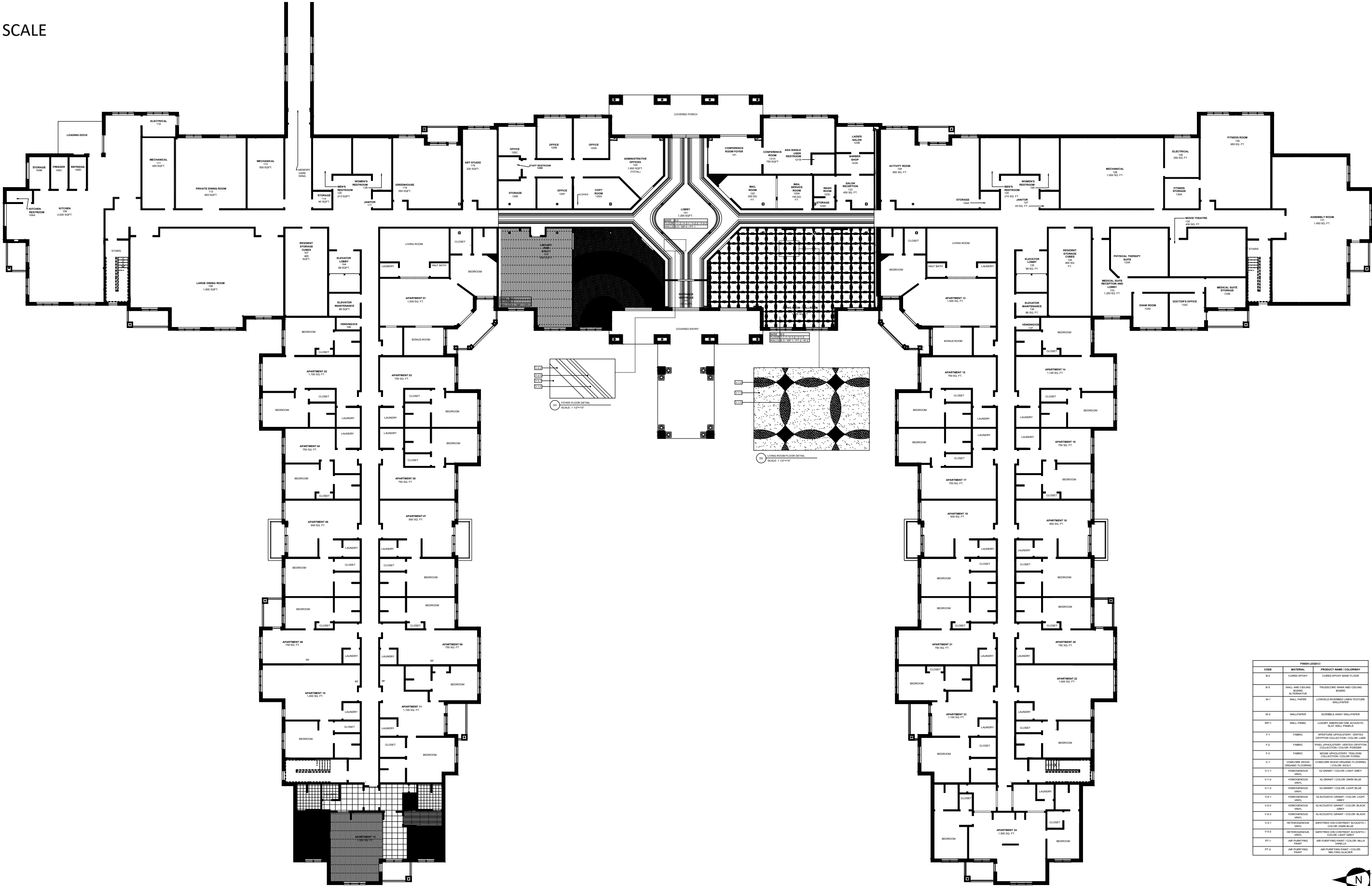


ADA ACCESSIBLE RESTROOM
SCALE: 1/4" = 1'-0"

| NOTES | |
|-------|------------------------------------|
| A | SLIP RESISTANT FLOORING |
| B | WALL MOUNTED SINK / ADA ACCESSIBLE |
| C | IMPERVIOUS WALL SURFACE |
| DF | DRINKING FOUNTAIN |

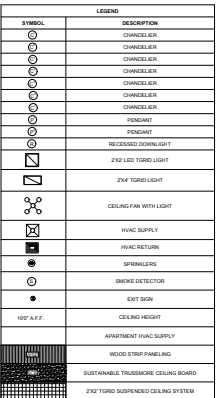
FINISH PLAN

NOT TO SCALE

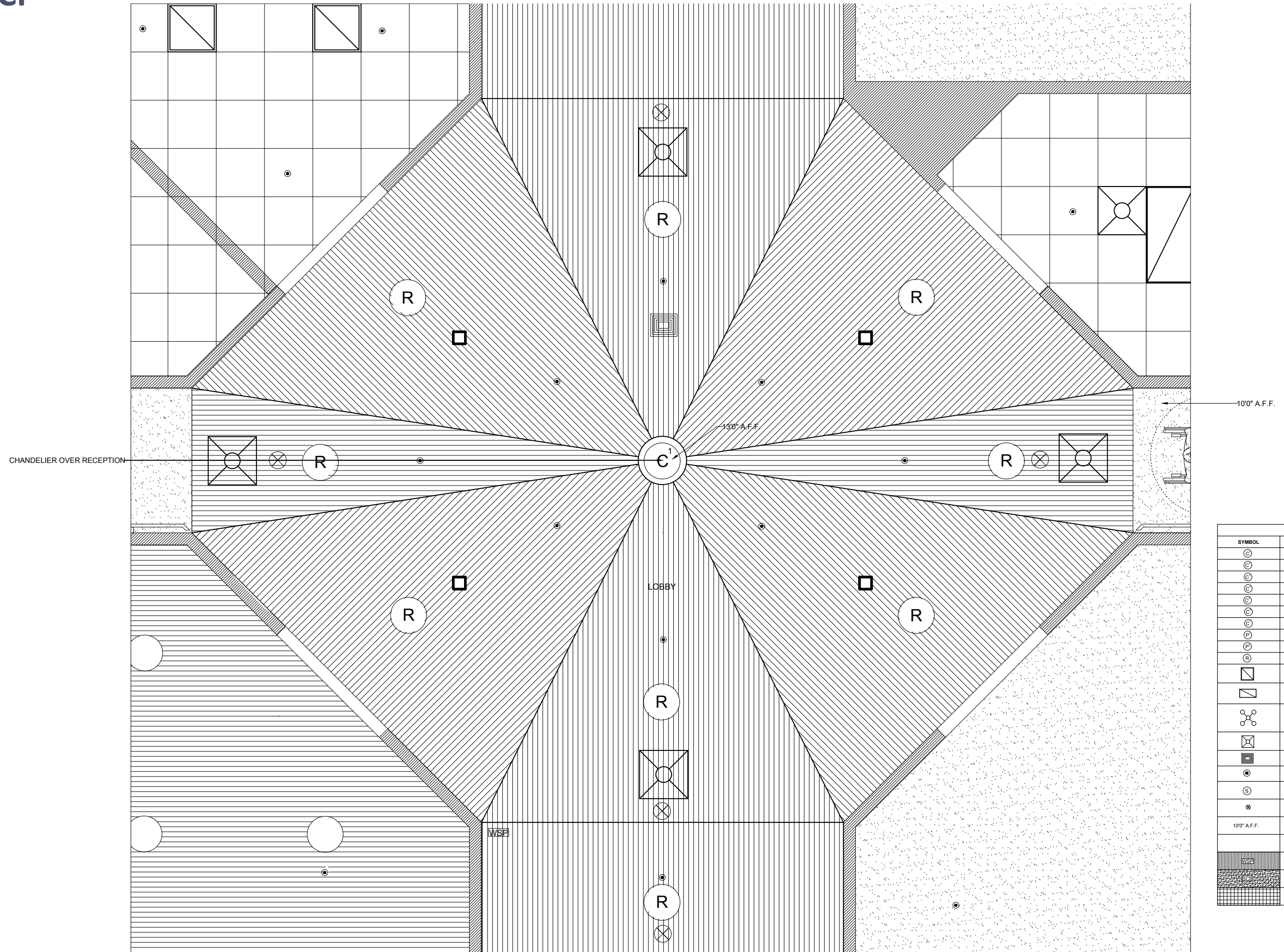



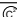



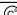
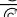








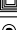





| FINISH LEGEND | | |
|---------------|--------------------------------|---|
| CODE | MATERIAL | PRODUCT NAME / COLORWAY |
| B-2 | CURED EPOXY | CURED EPOXY BASE FLOOR |
| B-5 | WALL AND CEILING BOARD | TRUSSCORE SHIMMED CEILING BOARD |
| W-1 | WALL PAPER | CONVELD REVERSED LINEN TEXTURE WALLPAPER |
| W-2 | WALLPAPER | SCRIBBLE ARMY WALLPAPER |
| W-3 | WALL PAPER | LUXURY AMERICAN OAK ACOUSTIC PLATE PAPER |
| F-1 | FABRIC | ARTISTURE LUXURY LUXURY VESTIBUL COLLECTION / COLOR LANE |
| F-2 | FABRIC | PAUL APPLA LUXURY LUXURY VESTIBUL COLLECTION / COLOR LANE |
| F-3 | FABRIC | MOORE LUXURY LUXURY VESTIBUL COLLECTION / COLOR LANE |
| C-1 | CONCRETE WOOD ORGANIC FLOORING | CONCRETE WOOD ORGANIC FLOORING / COLOR LANE |
| V-1-1 | HOMOGENEOUS VINYL | IG GRANT / COLOR LIGHT GREY |
| V-1-2 | HOMOGENEOUS VINYL | IG GRANT / COLOR DARK BLUE |
| V-1-3 | HOMOGENEOUS VINYL | IG GRANT / COLOR LIGHT BLUE |
| V-2-1 | HOMOGENEOUS VINYL | IG ACOUSTIC GRANT / COLOR LIGHT GREY |
| V-2-2 | HOMOGENEOUS VINYL | IG ACOUSTIC GRANT / COLOR BLACK GREY |
| V-2-3 | HOMOGENEOUS VINYL | IG ACOUSTIC GRANT / COLOR BLACK GREY |
| V-3-1 | HETEROGENEOUS VINYL | SHYFTED ION CONTRAST ACOUSTIC / COLOR DARK BLUE |
| V-3-2 | HETEROGENEOUS VINYL | SHYFTED ION CONTRAST ACOUSTIC / COLOR LIGHT GREY |
| P-1-1 | AIR PURIFYING PAINT | AIR PURIFYING PAINT / COLOR WALL VANILLA |
| P-1-2 | AIR PURIFYING PAINT | AIR PURIFYING PAINT / COLOR BELTING GLAZIER |

NOT TO SCALE





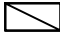



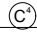

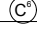
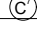
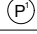
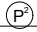
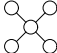

FOYER RCP



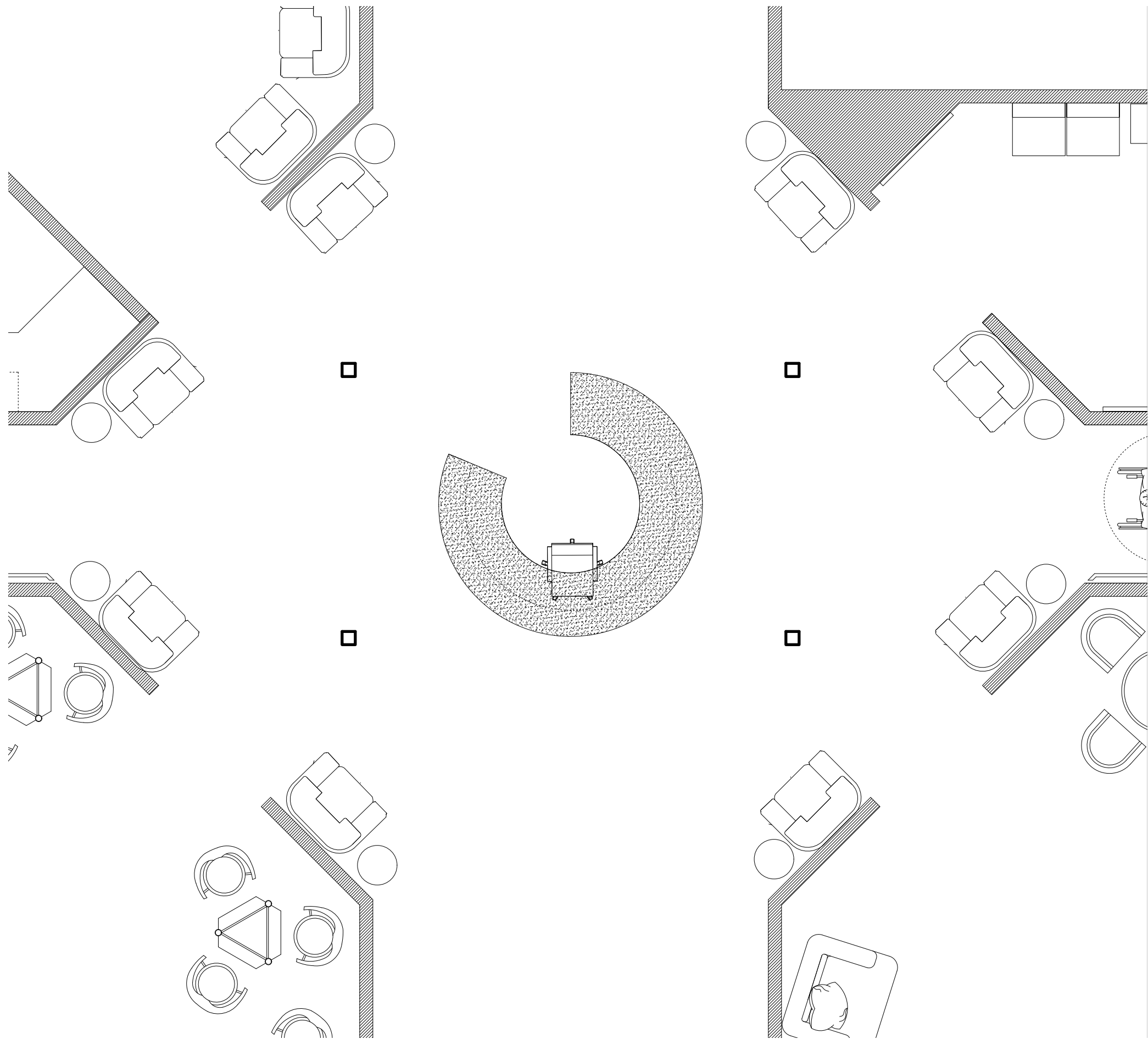
| SYMBOL | LEGEND |
|---|---------------------------------------|
|  | CHANDELIER |
|  | CHANDELIER |
|  | CHANDELIER |
|  | CHANDELIER |
|  | CHANDELIER |
|  | CHANDELIER |
|  | CHANDELIER |
|  | PENDANT |
|  | PENDANT |
|  | RECESSED DOWNLIGHT |
|  | 2'X2' LED TRGRID LIGHT |
|  | 2'X4' TRGRID LIGHT |
|  | CEILING FAN WITH LIGHT |
|  | HVAC SUPPLY |
|  | HVAC RETURN |
|  | SPRINKLERS |
|  | SMOKE DETECTOR |
|  | EXIT SIGN |
| 10'0" A.F.F. | CEILING HEIGHT |
| | APARTMENT HVAC SUPPLY |
|  | WOOD STRIP PANELING |
|  | SUSTAINABLE TRUSSMORE CEILING BOARD |
|  | 2'X2' TRGRID SUSPENDED CEILING SYSTEM |

LIGHTING

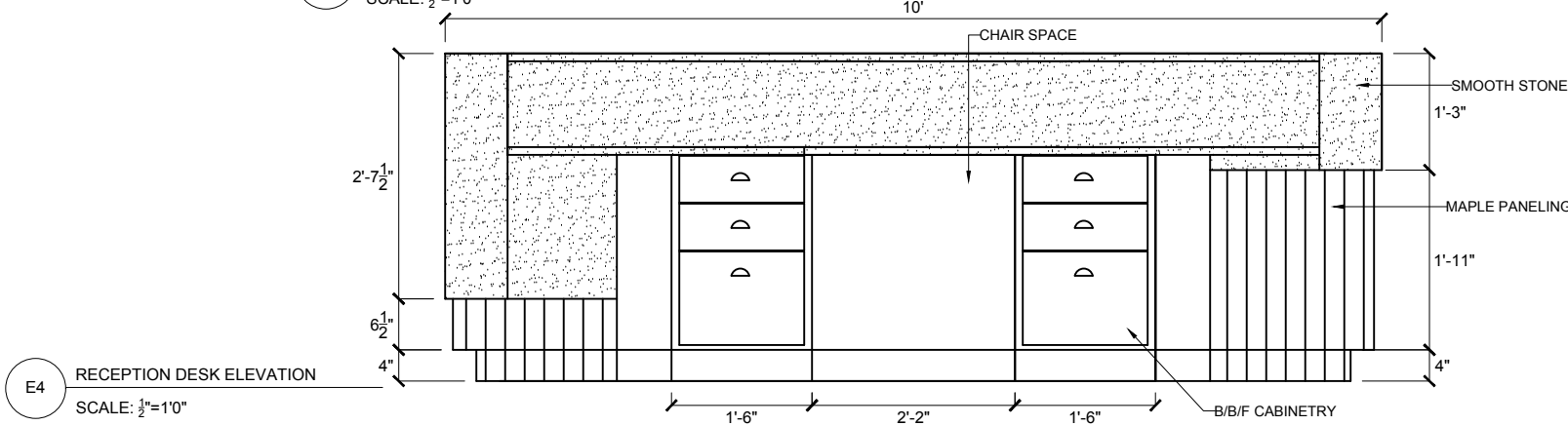
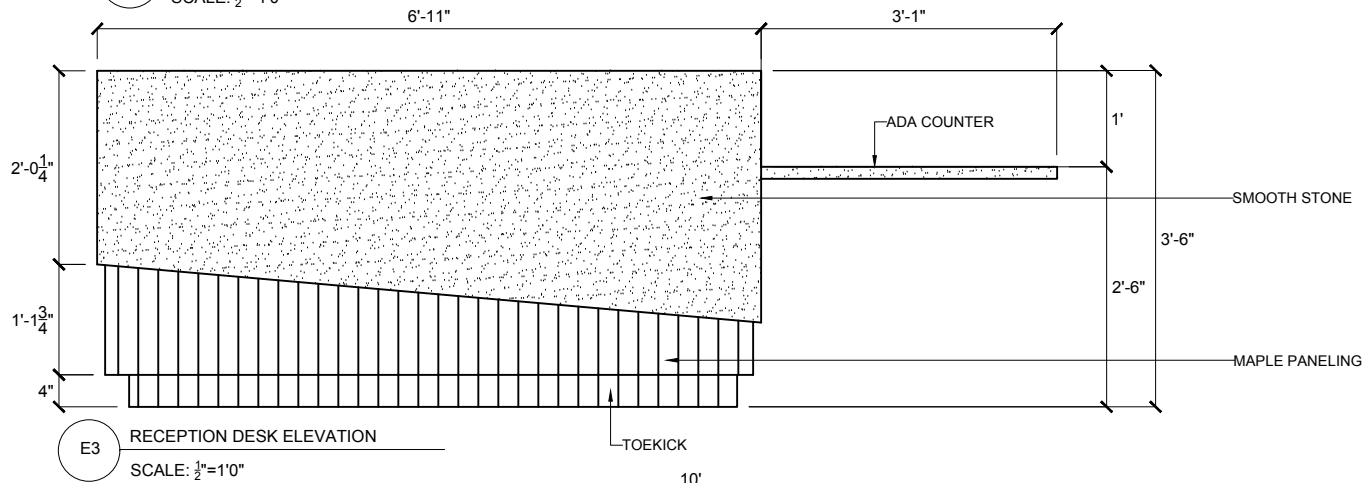
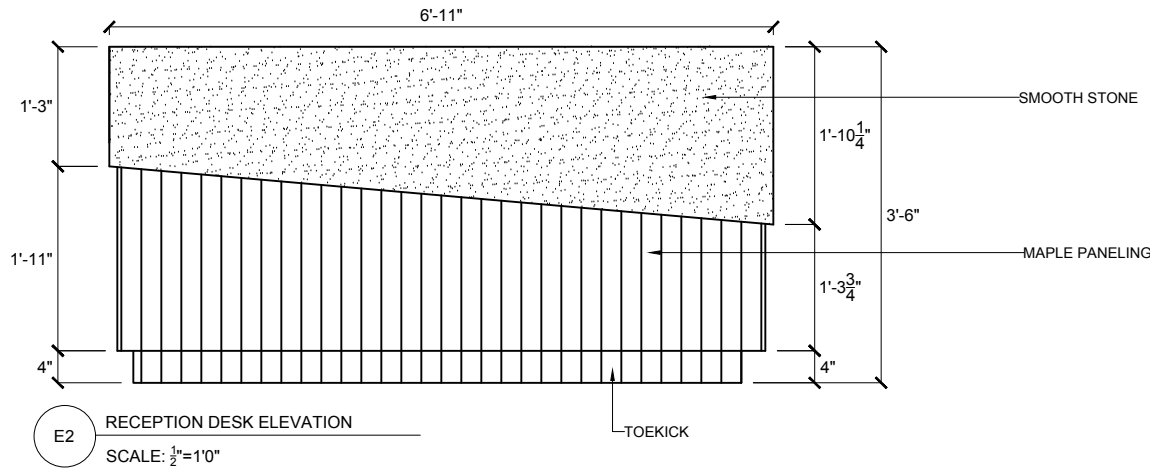
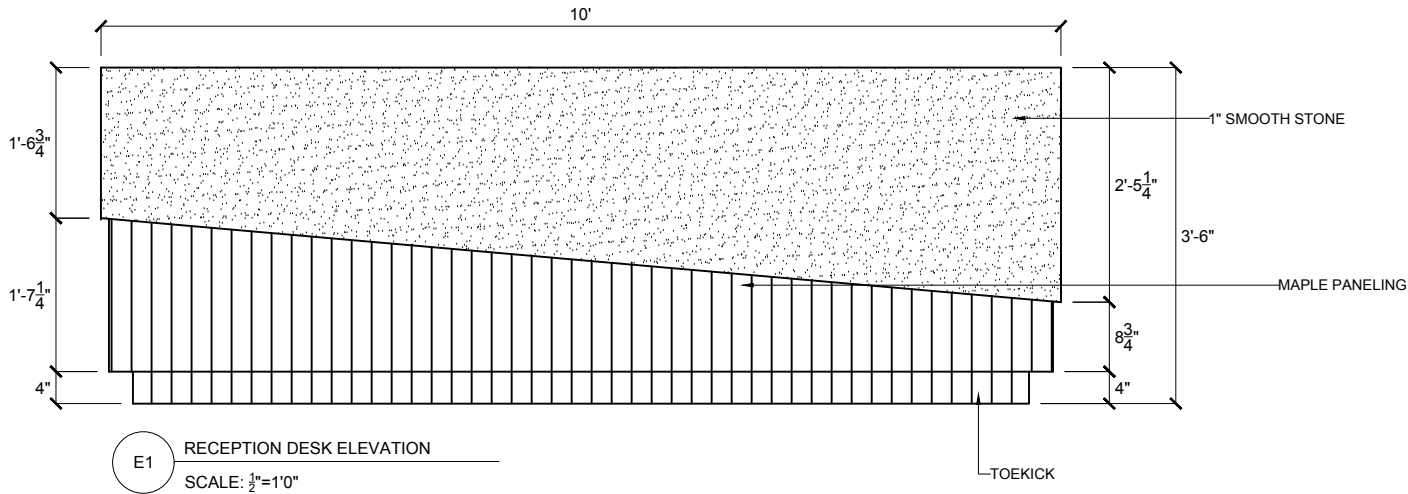
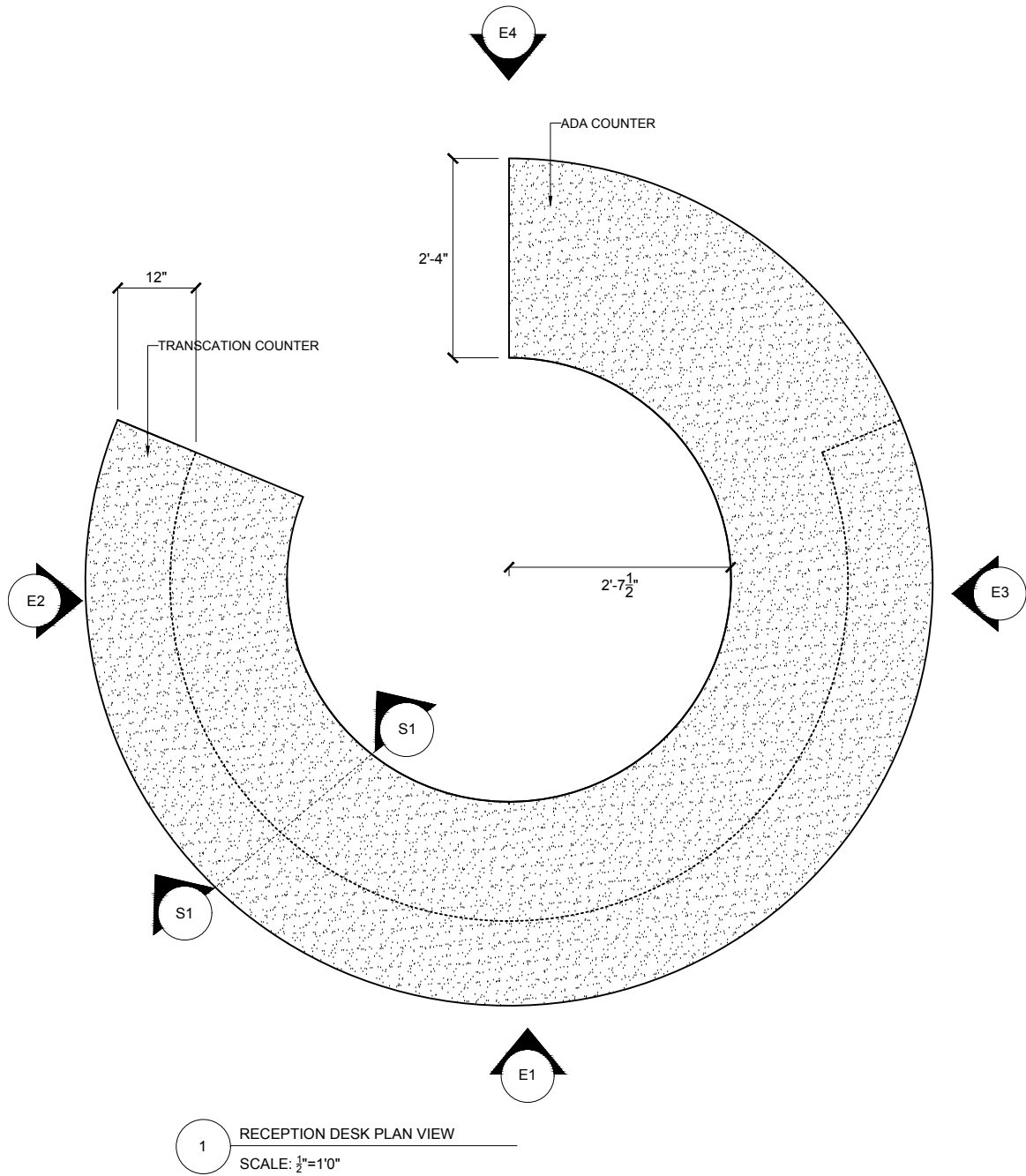
SCHEDULE

| LIGHTING SCHEDULE | | | | | | | |
|---|-------------------------------|---------------------|--------------------|--------------------|----------|-----------------|---|
| SYMBOL | TYPE | MANUFACTURER | CATALOG NO. / INFO | LAMP | VOLTS | MOUNTING | ROOMS |
|  | 6" RECESSED DOWNLIGHT | LIGHTOLIER | C6RDL | LED | 120 | RECESSED | MAIN CORRIDORS, RESTROOMS, APARTMENTS, LIVING, COFFEE BAR, LIBRARY, MAIN DINING, PRIVATE DINING, LOBBIES/FOYER |
|  | 2'X2' TGRID FIXTURE | SUPERIOR LIGHTING | SC9605 | LED | 100-227V | RECESSED | ASSEMBLY ROOM, MEDICAL SUITE, THEATRE, SYSTEMS AND MAINTENANCE ROOMS, CONFERENCE ROOM, OFFICE LOBBY, KITCHEN, ACTIVITY ROOM, ART ROOM, GREENHOUSE, SALON, |
|  | 2'X4' TGRID FIXTURE | SUPERIOR LIGHTING | SC9605 | LED | 100-227V | RECESSED | STAFF OFFICES, MAIL ROOM |
|  | 30" TIERED DRUM CHANDELIER | REJUVENATION | | LED A15 | 120V | SUSPENDED | FOYER |
|  | 36" CHANDELIER | MOD LIGHTING | 'BLOOM' | LED | 110-240V | FLUSH MOUNT | LIVING ROOM |
|  | LUXURY POST MODERN CHANDELIER | MOD LIGHTING | 'HELIA' | LED BUILT IN CHIPS | 110-240V | FLUSH MOUNT | LIBRARY |
|  | CHANDELIER | MOD LIGHTING | 'JANET' | LED | 90-260V | FLUSH MOUNT | DINING |
|  | CHANDELIER | REJUVENATION | 'MAUDE' | LED | 120V | FLUSH MOUNT | APARTMENT FOYER |
|  | CHANDELIER | MOD LIGHTING | 'BERKSHIRE' | LED | 120V | SEMI FLUSH | APARTMENT DINING |
|  | 36" CHANDELIER | REJUVENATION | 'TIERED DRUM' | LED A15 | 120V | SEMIFLUSH MOUNT | APARTMENT LIVING |
|  | SPUN CONE PENDANT | REJUVENATION | 'ANELLO' | LED | 120V | SUSPENDED | COFFEE BAR |
|  | 16" PENDANT | REJUVENATION | 'BLAINE' | LED | 120V | SUSPENDED | APARTMENT KITCHEN |
|  | SMART LED FAN WITH LIGHT | MINKA AIRE FANS | ITEM#: R055637 | LED | 75 | SUSPENDED | APARTMENT |
|  | EDGE LIT EXIT SIGN | EXIT SIGN WAREHOUSE | SKU : ESW-EL-G | LED | 120-277V | CEILING MOUNTED | ALL APPLICABLE |

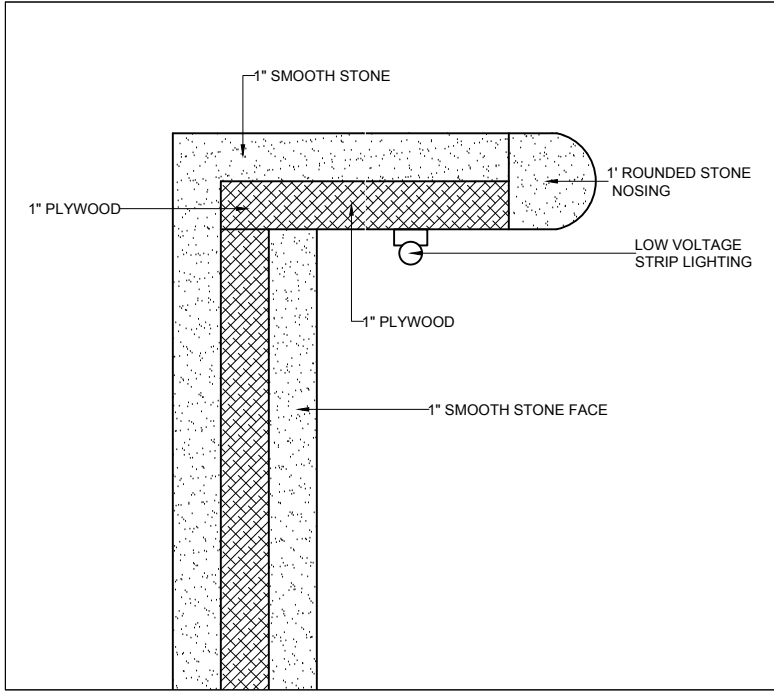
LOBBY
FURNITURE
PLAN



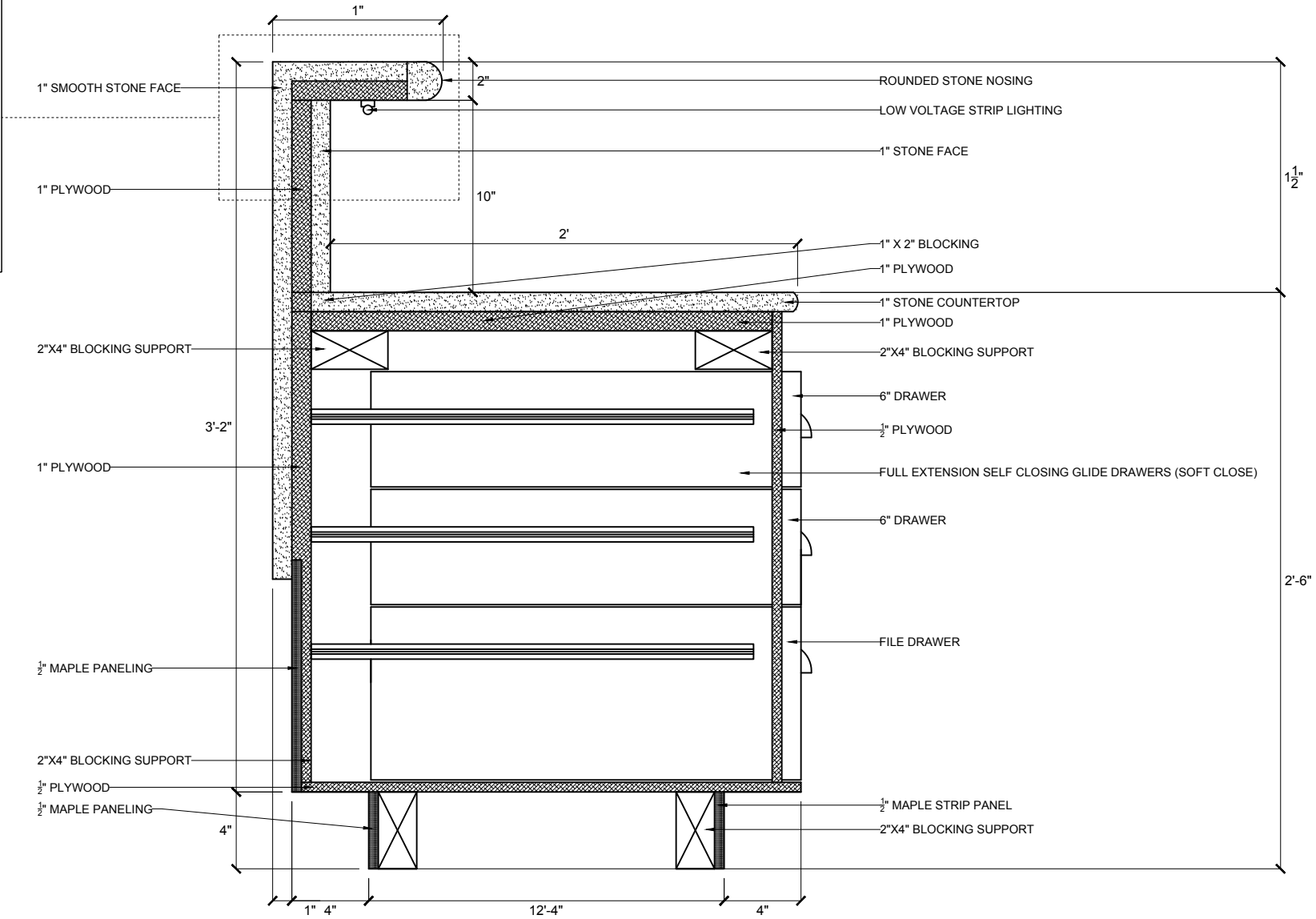
CABINET



CABINET

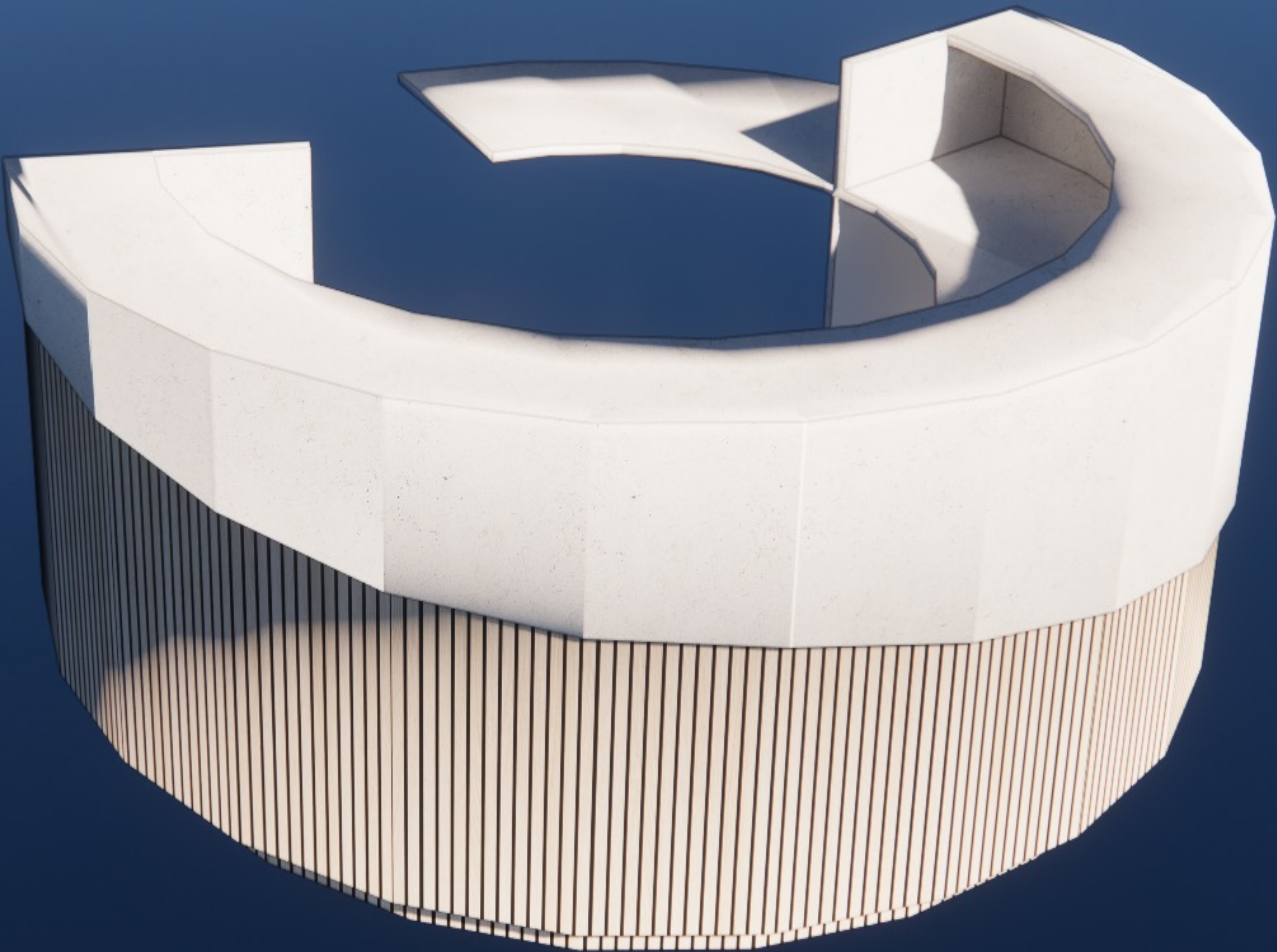
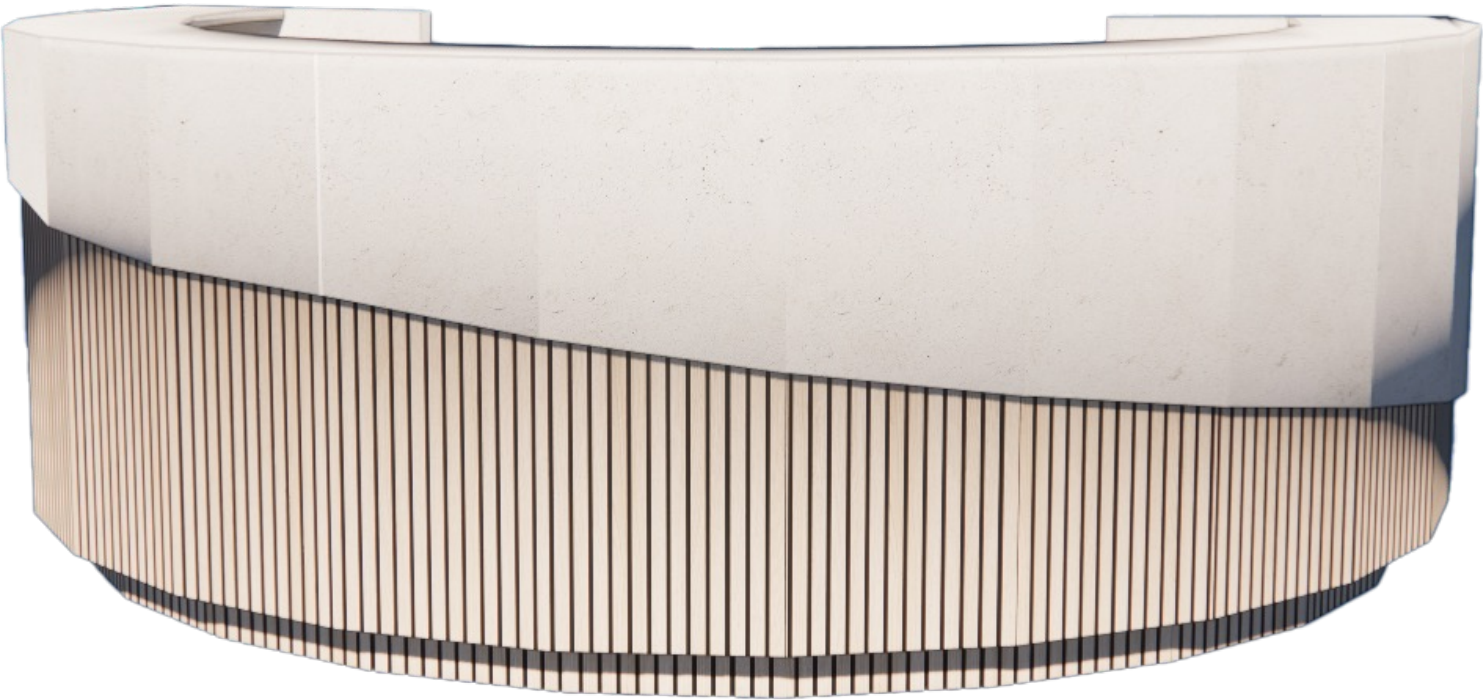


D1 RECEPTION DESK DETAIL
SCALE: 3"=1'0"



S1 RECEPTION DESK SECTION CUT
SCALE: 1 1/2"=1'0"

CABINET
RENDERING



PT-1

FOYER

WP-1

V-2-1

V-2-2

V-1-2

V-2-3



C-2

F-3



C-1

T-7



D-1

LIVING ROOM



V-3-2



PT-1

COFFEE BAR AND LOUNGE

W-1



V-3-1



C-5



T-5



C-5



C-5

PT-2

WP-1

LIBRARY



C-1

R-1

C-6



T-7



T-6



C-7

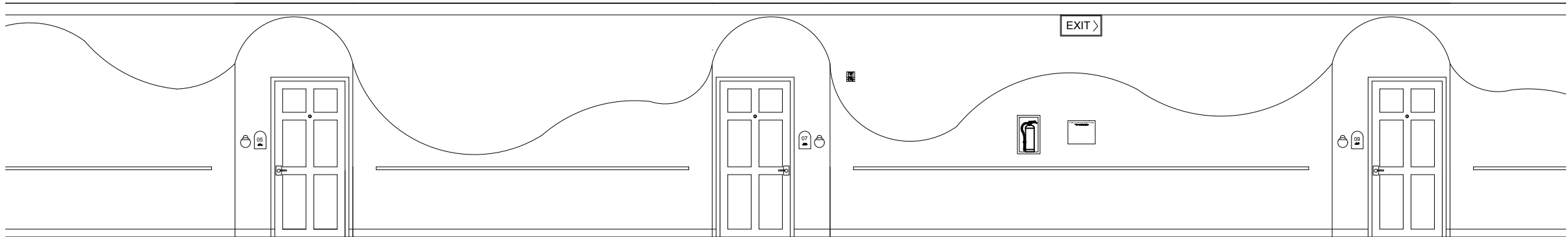


FINISH AND FFE SCHEDULES

| FFE SCHEDULE | | | | | |
|--------------|---------------------------------|-------------------------------------|-----------------------|--|--|
| CODE | DESCRIPTION | PRODUCT NAME | MANUFACTURER | SUSTAINABILITY | DETAILS |
| C-1 | ARMCHAIR | AUBURN CHAIR | WEST ELM | | SILVER TWILL |
| C-2 | DESK CHAIR | RANGE SWIVEL OFFICE CHAIR | WEST ELM | | FROST GRAY |
| C-3 | CHAIR | WAYNE DINING ARM CHAIR | WEST ELM | GREEN GUARD GOLD CERTIFIED | |
| C-4 | ARMCHAIR | BACALL CURVED SWIVEL CHAIR | WEST ELM | | |
| C-5 | CHAIR | CLASSON RECYCLED CHAIR | WEST ELM | CONSTRUCTED OF 25% RECYCLED PLASTIC | |
| C-6 | CHAIR | MIDCENTURY OFFICE CHAIR | WEST ELM | | |
| C-7 | ARM CHAIR | DELRAY CHAIR | WEST ELM | GREEN GUARD GOLD CERTIFIED | |
| T-1 | SIDE TABLE | HAND HAMMERED ALUMINUM SIDE TABLE | WEST ELM | | |
| T-2 | TABLE | MALFA ROUND DINING TABLE | WEST ELM | RECYCLED CONCRETE CONSTRUCTION | CONCRETE |
| T-3 | SIDE TABLE | VOLUME CONCRETE SIDE TABLE | WEST ELM | CRAFTED FROM SUSTAINABLE REINFORCED CONCRETE | CONCRETE |
| T-4 | COFFEE TABLE | MONTE LAVA STONE COFFEE TABLE | WEST ELM | | |
| T-5 | TABLE | GRAFF ROUND DINING TABLE | POTTERY BARN | | WOOD TWO TONE |
| T-6 | TABLE | MANZA SIDE TABLE | PATRICK CAINS DESIGNS | CONCRETE AND 99.9% RECYCLED STYROFOAM MIXTURE, HAND CRAFTED AND LOCALLY MADE | |
| T-7 | TABLE | GEARY ROUND TABLE | CB2 | CRAFTED WITH OAK, CERTIFIED SUSTAINABLE BY THE FFC | |
| T-16 | SIDE TABLE | ZAYDEN SIDE TABLE | WEST ELM | | HAND CRAFTED |
| D-1 | CUSTOM RECEPTION DESK | CUSTOM | CUSTOM | BAMBOO FACE (RAPIDLY RENEWABLE) | |
| L-1 | TABLE LAMP | RIPPLE CERAMIC TABLE LAMP | WEST ELM | CERAMIC CONSTRUCTION | |
| P-1 | PIANO | | | | |
| S-1 | SOFA | HARMONY SOFA | WEST ELM | | 74" |
| S-2 | SOFA | HARMONY SOFA | WEST ELM | | 104" |
| R-1 | RUG | GLIMMER RUG | WEST ELM | FAIR TRADE CERTIFIED, RECYCLED COTTON BACKING | PEARL GRAY |
| R-2 | RUG | DISTRESSED FOLIAGE RUG | WEST ELM | 35% WOOL, RECYCLED COTTON BACKING | BLUE COLORWAY |
| PL-1 | POTTED TREE | FIDDLE LEAF FIG INDOOR POTTED PLANT | LOCAL GREENHOUSE | PLANT LIFE | LIVING PLANT |
| E-1 | UNDER COUNTER REFRIGERATION | UNDER COUNTER REFRIGERATION | SUBZERO | RECYCLED CONTENT, STAINLESS STEEL | STAINLESS STEEL |
| E-2 | DISHWASHER | UNDER COUNTER REFRIGERATION | COVE | RECYCLED CONTENT, STAINLESS STEEL | STAINLESS STEEL |
| B-1 | CUSTOM COFFEE BAR | | CUSTOM | BAMBOO MATERIAL, RECYCLED COUNTER MATERIAL | |
| B-2 | CUSTOM BOOKSHELF BUILT IN | CUSTOM | CUSTOM | BAMBOO MATERIAL | BAMBOO PLANK CONSTRUCTION, FINISHED WITH PAINT |
| B-3 | CUSTOM FREESTANDING BOOKSHELVES | CUSTOM | CUSTOM | BAMBOO MATERIAL | BAMBOO PLANK CONSTRUCTION, FINISHED WITH PAINT |
| E-1 | MAC DESKTOP | MAC DESKTOP | APPLE | RECYCLED MATERIALS | |
| SC-3 | SCONCE | HENRY CERAMIC SCONCE | WEST ELM | | |

| FINISH SCHEDULE | | | | | |
|-----------------|------------------------------------|--|----------------------|--|-----------------------------------|
| CODE | MATERIAL | PRODUCT NAME / COLORWAY | MANUFACTURER | SUSTAINABILITY | |
| B-2 | CURED EPOXY | CURED EPOXY BASE FLOOR | - | - | LIVING,FOYER, LIBRARY, COFFEE BAR |
| B-5 | WALL AND CEILING BOARD ALTERNATIVE | TRUSSCORE WALL AND CEILING BOARD | TRUSSCORE | 100% RECYCLABLE, LEED V4.1 CERTIFIED | EVERY ROOM |
| W-1 | WALL PAPER | LOWVELD RIVERBED LINEN TEXTURE WALLPAPER | SARZA | PVC FREE, 100% RECYCLABLE, GREEN GUARD GOLD, UL ECO LOGO | COFFEE BAR |
| W-2 | WALLPAPER | SCRIBBLE AWAY WALLPAPER | SARZA | PVC FREE, 100% RECYCLABLE, GREEN GUARD GOLD, UL ECO LOGO | LIVING |
| WP-1 | WALL PANEL | LUXURY AMERICAN OAK ACOUSTIC SLAT WALL PANELS | THE WOOD VENEER HUB | BACKING FELT PRODUCED FROM RECYCLABLE MATERIALS | LIVING, FOYER, LIBRARY |
| F-1 | FABRIC | APERTURE UPHOLSTERY: VERTEX CRYPTON COLLECTION / COLOR: LAKE | ARCHITEX | AB2998 COMPLIANT, ANNEX XVII REACH COMPLIANT, CA01350 COMPLIANT, FR FREE, GREEN GUARD, PFAS FREE, PROPOSITION 65 COMPLIANT, RED LIST FREE | LIVING |
| F-2 | FABRIC | PIXEL UPHOLSTERY: VERTEX CRYPTON COLLECTION / COLOR: POWDER | ARCHITEX | AB2998 COMPLIANT, ANNEX XVII REACH COMPLIANT, CA01350 COMPLIANT, FR FREE, GREEN GUARD, PFAS FREE, PROPOSITION 65 COMPLIANT, RED LIST FREE | LIVING |
| F-3 | FABRIC | MOXIE UPHOLSTERY: TEKLOOM COLLECTION / COLOR: FOSSIL | ARCHITEX | AB2998 COMPLIANT, ANNEX XVII REACH COMPLIANT, CA01350 COMPLIANT, FR FREE, GREEN GUARD, PFAS FREE, PROPOSITION 65 COMPLIANT, RED LIST FREE | FOYER |
| C-1 | COMCORK WOOD ORGANIC FLOORING | COMCORK WOOD ORGANIC FLOORING / COLOR: SICILY | SUSTAINABLE FLOORING | GREEN GUARD GOLD CERTIFIED, BLUE ANGEL CERTIFIED, BREEAM COMPLIANT, NAUF, LEED COMPLIANT (MR6 AND MR4), RECYCLED COMPONENTS | LIBRARY |
| V-1-1 | HOMOGENOUS VINYL | IQ GRANIT / COLOR: LIGHT GREY | TARKETT | CA SECTION 01350, EPEAURL, GREEN CIRCLE CERTIFICATE, UN GLOBAL COMPACT COMPLANT, ASTHMA AND ALLERGY FRIENDLY CERTIFICATION, CARBON NEUTRAL PRODUCT, 26% RECYCLED CONTENT, ANTIMICROBIAL FREE, PHTHALLATE FLOOR SCORE CERTIFIED | LIVING |
| V-1-2 | HOMOGENOUS VINYL | IQ GRANIT / COLOR: DARK BLUE | TARKETT | CA SECTION 01350, EPEAURL, GREEN CIRCLE CERTIFICATE, UN GLOBAL COMPACT COMPLANT, ASTHMA AND ALLERGY FRIENDLY CERTIFICATION, CARBON NEUTRAL PRODUCT, 26% RECYCLED CONTENT, ANTIMICROBIAL FREE, PHTHALLATE FLOOR SCORE CERTIFIED | LIVING, FOYER |
| V-1-3 | HOMOGENOUS VINYL | IQ GRANIT / COLOR: LIGHT BLUE | TARKETT | CA SECTION 01350, EPEAURL, GREEN CIRCLE CERTIFICATE, UN GLOBAL COMPACT COMPLANT, ASTHMA AND ALLERGY FRIENDLY CERTIFICATION, CARBON NEUTRAL PRODUCT, 26% RECYCLED CONTENT, ANTIMICROBIAL FREE, PHTHALLATE FLOOR SCORE CERTIFIED | LIVING |
| V-2-1 | HOMOGENOUS VINYL | IQ ACOUSTIC GRANIT / COLOR: LIGHT GREY | TARKETT | CA SECTION 01350, EPEAURL, GREEN CIRCLE CERTIFICATE, UN GLOBAL COMPACT COMPLANT, ASTHMA AND ALLERGY FRIENDLY CERTIFICATION, CARBON NEUTRAL PRODUCT, 26% RECYCLED CONTENT, ANTIMICROBIAL FREE, PHTHALLATE FLOOR SCORE CERTIFIED | FOYER |
| V-2-2 | HOMOGENOUS VINYL | IQ ACOUSTIC GRANIT / COLOR: BLACK GREY | TARKETT | CA SECTION 01350, EPEAURL, GREEN CIRCLE CERTIFICATE, UN GLOBAL COMPACT COMPLANT, ASTHMA AND ALLERGY FRIENDLY CERTIFICATION, CARBON NEUTRAL PRODUCT, 26% RECYCLED CONTENT, ANTIMICROBIAL FREE, PHTHALLATE FLOOR SCORE CERTIFIED | FOYER |
| V-2-3 | HOMOGENOUS VINYL | IQ ACOUSTIC GRANIT / COLOR: BLACK | TARKETT | CA SECTION 01350, EPEAURL, GREEN CIRCLE CERTIFICATE, UN GLOBAL COMPACT COMPLANT, ASTHMA AND ALLERGY FRIENDLY CERTIFICATION, CARBON NEUTRAL PRODUCT, 26% RECYCLED CONTENT, ANTIMICROBIAL FREE, PHTHALLATE FLOOR SCORE CERTIFIED | FOYER |
| V-3-1 | HETEROGENOUS VINYL | SAFETRED ION CONTRAST ACOUSTIC / COLOR: DARK BLUE | TARKETT | RECYCLABLE, RESTART READT, 26% RECYCLED CONTENT, PLATINUM TOTAL VOC EMISSION, E1 FORMALDEHYDE, SCS FLOOR SCORE, ISO 14001 | COFFEE BAR |
| V-3-2 | HETEROGENOUS VINYL | SAFETRED ION CONTRAST ACOUSTIC / COLOR: LIGHT GREY | TARKETT | RECYCLABLE, RESTART READT, 26% RECYCLED CONTENT, PLATINUM TOTAL VOC EMISSION, E1 FORMALDEHYDE, SCS FLOOR SCORE, ISO 14001 | COFFEE BAR |
| PT-1 | AIR PURIFYING PAINT | AIR PURIFYING PAINT / COLOR: NILLA VANILLA | ECOSPAINTS | ASTMD4236, 0 VOC, ABSORBS AND NEUTRALIZES CHEMICALS AND POLLUTENTS AND VOCs FOR IMPROVED INDOOR AIR QUALITY | COFFEEBAR, FOYER |
| PT-2 | AIR PURIFYING PAINT | AIR PURIFYING PAINT / COLOR: MELTING GLACIER | ECOSPAINTS | ASTMD4236, 0 VOC, ABSORBS AND NEUTRALIZES CHEMICALS AND POLLUTENTS AND VOCs FOR IMPROVED INDOOR AIR QUALITY | LIVING, LIBRARY |

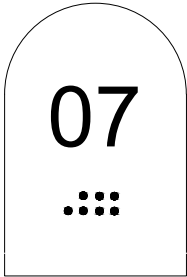
CORRIDOR ELEVATION



PARTIAL SOUTHERN CORRIDOR
SCALE: $\frac{3}{16}" = 1'0"$



DETAIL A
FIRE EVACUATION PLAN
N.T.S.



DETAIL B
ROOM SIGNAGE
N.T.S.

FOYER
RENDERING



COFFEE BAR LOUNGE
RENDERING

